



# ***SEM-223 SEMI AUTOMATIC FIREARM***

***USER MANUAL & SPARE PARTS CATALOGUE***



AS9100D

ISO 9001

ISO 50001

ISO 10002

ISO 45001

ISO 14001

ISO 27001

# INDEX

WARNINGS & SAFETY RULES	1-4	FIELD STRIPPING	17
BASICS OF SAFE GUN USE	4	- Clearing Misfire	17
LIABILITY / CHAMBER SAFETY	5	- Removing the recoil spring from Bolt	19
GENERAL INFORMATION	6	- Attaching the lower and upper receivers	19
BASIC FEATURES	6	MAGAZINE ASSEMBLY	20
TECHNICAL SPECIFICATION	7-10	USER LEVEL MAINTENANCE AND CLANING	20
- SEM-223	7	- Cleaning the Intervals	21-22
- SEM-223P	8	STROGE	21
- SEM-223M	9	SPARE PARTS CATALOGUE	23
- SEM-223L	10	- Exploded View	24-26
CONTENTS OF THE GUN'S CARRYING CASE	11	- Part List	24
CONTENTS OF CLEANING KIT	11	WARRANTY	25-26
SAFETY OPERATIONS	12		
HOW TO LOAD	13-14		
SIGHT SYSTEM AND ADJUSTMENTS	14		
HOW TO AIM AND FIRE GUN	15		
HOW TO UNLOAD	16		

# IMPORTANT SAFETY MESSAGE

Children are attracted to and can operate firearms which can cause severe injuries or death. Prevent child access by always keeping gun locked, unloaded and separated from ammunition when not in use. If you keep a loaded firearm where a child obtains and improperly uses it, you may be fined or sent to prison.

## **Firearm Safety Depends on You**

A gun is only as safe as the person operating it. You can never be overly careful when handling a firearm.

Carelessness is often the cause of shooting accidents, such as failing to keep the muzzle pointed in a safe direction, not being sure of your target and what is behind it, failing to properly engage the safety, leaving ammunition in the chamber or using improper loads. Since a bullet can never be called back once fired, such errors in gun handling can result in the loss of life, severe injury or property damage thus, it is crucial for your safety and the safety of those around you that you learn the principles of safe gun handling and storage before you begin to use your new firearm. Be a safe shooter - please read this instruction book thoroughly even if this is not your first firearm purchase as not all firearms are the same. The first step in being a safe shooter is to learn the rules for the safe operation and handling of firearms. There is nothing more important in gun handling than safety.

## **THE TEN RULES OF FIREARM SAFETY**

The Ten Rules of Firearm Safety must be etched into your memory before you begin to handle firearms. These rules are intended to be followed by all persons handling firearms in the field, on the range or at home. Please read, review and understand these rules before you begin to use or even take your new firearm out of its box. Remember, firearms safety depends on you! Memorizing these safety rules will help prevent gun accidents. Please study these safety rules before handling your firearm.

### **▲ SAFETY RULES**

#### **RULE 1**

**Always Keep the Muzzle Pointed in a Safe Direction**

This is the most basic and most important safety rule. A safe direction is one in which an accidental discharge will not cause injury to yourself, to others or property damage. This is particularly important when loading or unloading your firearm. Never point your gun at anything you do not intend to shoot. Treat every gun as if it were loaded at all times.



# IMPORTANT SAFETY MESSAGE

## **RULE 2**

### **Firearms Should Be Unloaded When Not Actually in Use**

Firearms should only be loaded when you are in the field or on the target range or shooting area, ready to shoot. When not in use, firearms and ammunition should be secured in a safe place, separate from each other. Remember to unload your firearm completely so that there is no ammunition in the chamber or magazine. Before handling this or any firearm, or handing it to someone else, visually check the chamber. Never assume a gun is unloaded even if you were the last person to use it. Never cross a fence, climb a tree, wade through a stream or perform any awkward movement with a loaded gun. When in doubt, unload your gun! Never pull or push a loaded firearm toward yourself or another person. Never carry a loaded gun in a scabbard, a holster not being worn or a gun case - common sense prevails in gun safety!

## **RULE 3**

### **Don't Completely Rely on Your Gun's Safety**

Treat every gun as though it could fire at any time, even if you are not applying pressure to the trigger. The "safety" on a firearm is a mechanical device which, like any such device, can become inoperable at the worst possible time and fail to function. By mistake, you may think the safety is "ON" when it actually is not. Or you may think your gun is unloaded when there is actually a round of ammunition in it. The safety serves as a supplement to proper gun handling but cannot serve as a substitute for common sense. Never handle a gun carelessly and assume that the gun won't fire just because "the safety is on." Never touch the firearm's trigger until you are ready to shoot.

Keep your fingers away from the trigger when loading or unloading. Never pull the trigger when the safety is engaged or when the safety is positioned between the "SAFE" and "FIRE" positions.

### **Alcohol, Drugs and Guns Don't Mix. Make No Mistake About It!**

Never handle firearms after consuming alcohol or taking drugs that can affect your judgment. Shoot sober! Alcohol, certain kinds of drugs and firearms don't mix. Safe firearms handling requires alertness and concentration on one's actions. You cannot handle a firearm safely after consuming alcohol. Never consume anything that can impair your judgment or physical coordination when handling a firearm.

## **RULE 4**

### **Be Sure of Your Target - And What Is Beyond It!**

Once fired, a bullet (or shot charge) can never be called back; so before you shoot, know where the bullet is going and what it will strike. Be certain your shot will not injure someone or strike something beyond the target. Never fire in the direction of noise, a movement or at any object you cannot positively identify. Be aware that a .22 Short bullet can travel over 1 ½ miles. A centerfire cartridge, such as the .30-06, can send its bullet over 3 miles. Shotgun pellets can travel 500 yards and a shotgun slug has a range of over a half mile. Make sure your shot has a safe backstop such as a hillside. Keep in mind how far the bullet will travel if it misses your intended target. You are responsible for your actions and judgment.



# IMPORTANT SAFETY MESSAGE

## **RULE 5**

### **Use the Correct Ammunition**

Every firearm is designed to use a certain caliber or gauge of ammunition. It is important that you use the correct ammunition for your firearm. Information on the correct ammunition to use with your firearm appears in the firearm's instruction manual and the manufacturer's markings on the firearm itself. Use of the wrong ammunition, improperly reloaded ammunition or corroded ammunition can result in the destruction of the firearm, serious personal injury and/or death. Form the habit of examining every round of ammunition before you put it into your gun to ensure it is of the proper gauge or caliber and that it is in good condition.

## **RULE 6**

If Your Gun Fails to Fire When the Trigger Is Pulled, Handle With Care. If a cartridge or shell does not fire when the trigger is pulled, follow Commandment #1 and keep the firearm's muzzle pointed in a safe direction. Keep the muzzle down range with the action closed and wait at least 30 seconds (to ensure that the ammunition is not delayed in firing) before carefully opening the action, taking care to avoid exposure to the breech area and unloading the firearm and safely disposing of the ammunition.

## **RULE 7**

### **Always Wear Eye and Ear Protection When Shooting**

Exposure to shooting noise can permanently damage hearing. Flying debris, such as powder residue and ejected cartridge cases, can injure your eyes.

Thus, it is only common sense to wear both eye protection (such as shooting glasses) and ear protection (such as a sound-muffling headset) whenever shooting. Also, wear eye protection when cleaning or disassembling your gun to ensure that cleaning solvent and tensioned parts (such as springs) do not come into contact with your eyes.

## **Rule 8**

Be Sure the Barrel Is Clear of Obstructions Before Shooting. Discharging a firearm with an obstruction in the barrel can result in personal injury, property damage and/or death. Before you load your firearm, check the chamber and magazine to ascertain that no ammunition is inside. Also, check the inside of the barrel (called the "bore") to ensure it is free of obstructions. Even a small amount of mud, snow or excess lubricating oil or grease in the bore can cause excessive pressures resulting in a bulged or burst barrel which can injure or kill the shooter and bystanders. It is a good idea to make a habit of cleaning the bore and checking for obstructions with a cleaning rod just before each shooting session. If the noise or recoil experienced upon firing seems low or weak, or something doesn't feel "right," cease firing immediately and check to make sure that there is no obstruction in the barrel. Placing an undersized Shell or cartridge into a gun (such as a 20 gauge shell in a shotgun chambered for 12 gauge ammunition) can result in the smaller round of ammunition failing into the barrel and acting as an obstruction. When a round is subsequently fired, the barrel may burst, causing injury to the shooter and bystanders. For reference, re-read Commandment #5.



# IMPORTANT SAFETY MESSAGE

## RULE 9

Do Not Alter or Modify Your Gun and Have It Serviced Regularly. Firearms are complex mechanisms that are designed to function properly in their original condition. Any alterations or changes made to a firearm after its manufacture can make the gun unsafe and will void its warranty. Do not jeopardize your safety or the safety of others by altering the trigger, mechanical safety or other mechanisms of your firearm. You should have your firearm periodically checked for proper functioning and serviced by a qualified gunsmith.

## RULE 10

Learn the Mechanical and Handling Characteristics of Your Firearm. Not all firearms operate the same way. The method of carrying, handling and operating firearms varies with the mechanical characteristics of each gun. Thus, you should never handle any firearm until you become familiar with the safe handling, loading, unloading and carrying procedures for that particular firearm, as well as the rules for safe gun handling in general.

## LEAD WARNING!

Discharging firearms in poorly ventilated areas, cleaning firearms or handling ammunition may result in exposure to lead and other substances known to cause birth defects, reproductive harm and other serious injuries. Have adequate ventilation at all times when shooting. Wash hands thoroughly after exposure.

## Basics of Safe Gun Handling

- 1- Always keep the muzzle pointed in a safe direction.
- 2- Firearms should be unloaded when not actually in use.
- 3- Don't totally rely on your gun's safety.
- 4- Be sure of your target and what is beyond it.
- 5- Use the correct ammunition for your firearm.
- 6- If your gun fails to fire when the trigger is pulled, handle with care.
- 7- Always wear eye and ear protection when shooting and cleaning.
- 8- Be sure the barrel is clear of obstructions before shooting.
- 9- Don't alter or modify your firearm and have your firearm(s) serviced regularly.
- 10- Learn the mechanics and handling characteristics of the firearm you are using.

Safe gun handling depends on you! A safe shooter is a knowledgeable shooter.

**WARNING!** STOP SHOOTING IMMEDIATELY AND UNLOAD YOUR FIREARM if your firearm develops a mechanical malfunction; binding or stoppage, spitting powder/gas, a cartridge primer is punctured, a cartridge case is bulged or ruptured, or the sound on firing does not sound quite right. Do NOT try one more shot, but unload your firearm and take it and the ammunition to a qualified gunsmith. Do not assume that the firearm is empty merely because you checked the chamber. You must also check the bore for any obstruction.



## IMPORTANT SAFETY MESSAGE, LIABILITY, CHAMBER SAFETY FLAG

**WARNING!** Always ensure that the ammunition you are using is clean, undamaged and of the proper caliber before loading your pistol. The manufacturer and distributor of this pistol disclaim any liability for the use of remanufactured, reloaded or hand-loaded ammunition. Protect your investment in this fine firearm by using only factory fresh, quality ammunition. The use of improper caliber or low-quality ammunition could result in injury, death and/or property damage upon firing. Remember, firearms safety depends on you! Follow all warnings provided by the manufacturer of the ammunition you are using.

### LIABILITY

Our Products are classified as FIREARMS and are sold by AKDAŞ with the understanding that we will not be liable in any way for firearm malfunction, physical injury or property damage resulting in whole or in part from:

- Criminal or negligent shootings
- Improper, careless or malicious use
- Unauthorized modifications or replacement of parts
- Defective, inappropriate, hand-loaded or reloaded ammunition
- Corrosion/Maintenance neglect
- Other effects beyond our direct and immediate control

This limitation applies regardless of whether liability is based on contract, negligence or strict liability (including any failure to warn). AKDAŞ SİLAH A.Ş. In no event shall we be liable for incidental or consequential damages such as loss of use of property, business loss, loss of profits or profits.

Keep this manual next to your firearm. Make sure you understand the warnings, operating instructions and safety procedures. When loaning or selling a firearm, make sure this manual is included with the gun. You can request a copy of this manual from AKDAŞ SİLAH A.Ş.

THE SAFETY OF FIREARMS IS ENTIRELY THE RESPONSIBILITY OF THE SHOOTER. ALWAYS TREAT ALL FIREARMS AS LOADED!

IMPORTANT! READ THE SECTION AND WARNINGS IN THIS BOOKLET BEFORE USING THE FIREARM.

### CHAMBER SAFETY FLAG

AKDAŞ firearm is shipped with a chamber safety flag. The chamber safety flag prevents the chambering of a round when installed and provides a readily visible indication that the firearm's chamber is empty. The chamber safety flag is to be installed in the firearm's chamber at all times when the firearm is not in use. Many public ranges require chamber safety flags be installed when the firing line is cold.



# GENERAL INFORMATION



Congratulations on your purchase of SEM-223, SEM-223P, SEM-223M, SEM-223L. With proper care and handling, it will give you long, reliable service. The SEM-223 series are automatic pistols chambered for the .223 mm cartridge. The Picatinny rails on the upper receiver and the M-Lock on the sides of the forearm allow for the attachment of compatible accessories. This .223mm semi-automatic pistol features a gas operated short stroke for a more balanced and accurate shot.

## BASIC FEATURES

- Light and ergonomic for ease of use and transportation
- High wear resistant, hard chrome coated barrel alloy that provides a long barrel life span
- Thanks to overhead spring system gives to possibility of use with stockless, folding stock or telescopic stock
- Possibility to use with folding stock or telescopic stock
- Thanks to the Picatinny rails on the bottom, top and sides of the barrel and the upper body, it allows the attachment and use of additional equipment



## TECHNICAL SPECIFICATIONS : SEM-223



<b>Caliber</b>	: 223 mm	<b>Fire Selector Position</b>	: Ambidextrous
<b>Barrel Length</b>	: 190.5 mm (7.5")	<b>Trigger Pull Force</b>	: 35-65 Newton (7.7-14 lb)
<b>Barrel Material</b>	: AISI-SAE 4140 (42CrMo4)	<b>Cocking Force</b>	: 40-100 Newton (8.7-22 lb)
<b>Barrel Finish</b>	: Chrome Plated	<b>Safety</b>	: Hammer Block
<b>Receivers Material</b>	: 7075 T6 Aluminum Alloy	<b>Sight</b>	: Mechanic Sight
<b>Muzzle</b>	: 1/2-28 UNEF	<b>Height</b>	: 218 mm (8.58") Approx
<b>Flash Hiders</b>	: 46 mm (1.8")	<b>Width</b>	: 57.5 mm (2.26") Approx
<b>Magazine Capacity</b>	: 10-20-30 Atm	<b>Range</b>	: 400 m (1312 ft) (Effective)
<b>Total Length (without stock)</b>	: Min. 470 mm (18.5")	<b>Shot Pattern</b>	: 4 MOA / 100 m
<b>Weight (without magazine)</b>	: Min. 2350 gr (5.18 lb)	<b>Muzzle Velocity</b>	: 725(+50) m/s (2379 ft/s)
<b>Operation</b>	: Gas operated- Short Stroke	<b>Barrel Profile</b>	: NATO Stanag 4172, 6 grooves right hand twist, 1:7 Luger Plus
<b>Mode of Operation</b>	: Semi-Automatic		



## TECHNICAL SPECIFICATIONS : SEM-223P



<b>Caliber</b>	: 223 mm	<b>Fire Selector Position</b>	: Ambidextrous
<b>Barrel Length</b>	: 254 mm (10")	<b>Trigger Pull Force</b>	: 35-65 Newton (7.7-14 lb)
<b>Barrel Material</b>	: AISI-SAE 4140 (42CrMo4)	<b>Cooking Force</b>	: 40-100 Newton (8.7-22 lb)
<b>Barrel Finish</b>	: Chrome Plated	<b>Safety</b>	: Hammer Block
<b>Receivers Material</b>	: 7075 T6 Aluminum Alloy	<b>Sight</b>	: Mechanic Sight
<b>Muzzle</b>	: 1/2-28 UNEF	<b>Height</b>	: 218 mm (8.58") Approx
<b>Flash Hiders</b>	: 46 mm (1.8")	<b>Width</b>	: 57.5 mm (2.26") Approx
<b>Magazine Capacity</b>	: 10-20-30 Atm	<b>Range</b>	: 400 m (1312 ft) (Effective)
<b>Total Length (without stock)</b>	: Min. 525 mm (20.65")	<b>Shot Pattern</b>	: 4 MOA / 100 m
<b>Weight (without magazine)</b>	: Min. 2440 gr (5.38 lb)	<b>Muzzle Velocity</b>	: 725(±50) m/s (2379 ft/s)
<b>Operation</b>	: Gas operated- Short Stroke	<b>Barrel Profile</b>	: NATO Stanag 4172, 6 grooves right hand twist, 1:7 Luger Plus
<b>Mode of Operation</b>	: Semi-Automatic		



## TECHNICAL SPECIFICATIONS : SEM-223M



<b>Caliber</b>	: 223 mm	<b>Fire Selector Position</b>	: Ambidextrous
<b>Barrel Length</b>	: 304.8 mm (12")	<b>Trigger Pull Force</b>	: 35-65 Newton (7.7-14 lb)
<b>Barrel Material</b>	: AISI-SAE 4140 (42CrMo4)	<b>Cocking Force</b>	: 40-100 Newton (8.7-22 lb)
<b>Barrel Finish</b>	: Chrome Plated	<b>Safety</b>	: Hammer Block
<b>Receivers Material</b>	: 7075 T6 Aluminum Alloy	<b>Sight</b>	: Mechanic Sight
<b>Muzzle</b>	: 1/2-28 UNEF	<b>Height</b>	: 218 mm (8.58") Approx
<b>Flash Hiders</b>	: 46 mm (1.8")	<b>Width</b>	: 57.5 mm (2.26") Approx
<b>Magazine Capacity</b>	: 10-20-30 Atm	<b>Range</b>	: 450 m (1476 ft) (Effective)
<b>Total Length (without stock)</b>	: Min. 580 mm (22.84")	<b>Shot Pattern</b>	: 4 MOA / 100 m
<b>Weight (without magazine)</b>	: Min. 2530 gr (5.58 lb)	<b>Muzzle Velocity</b>	: 850(±50) m/s (2788 ft/s)
<b>Operation</b>	: Gas operated- Short Stroke	<b>Barrel Profile</b>	: NATO Stanag 4172, 6 grooves right hand twist, 1:7 Luger Plus
<b>Mode of Operation</b>	: Semi-Automatic		

## TECHNICAL SPECIFICATIONS : SEM-223L



<b>Caliber</b>	: 223mm	<b>Fire Selector Position</b>	: Ambidextrous
<b>Barrel Length</b>	: 406.4 mm (16")	<b>Trigger Pull Force</b>	: 35-65 Newton (7.7-14 lb)
<b>Barrel Material</b>	: AISI-SAE 4140 (42CrMo4)	<b>Cocking Force</b>	: 40-100 Newton (8.7-22 lb)
<b>Barrel Finish</b>	: Chrome Plated	<b>Safety</b>	: Hammer Block
<b>Receivers Material</b>	: 7075 T6 Aluminum Alloy	<b>Sight</b>	: Mechanic Sight
<b>Muzzle</b>	: 1/2-28 UNEF	<b>Height</b>	: 218 mm (8.58") Approx
<b>Flash Hiders</b>	: 46 mm (1.8")	<b>Width</b>	: 57.5 mm (2.26") Approx
<b>Magazine Capacity</b>	: 10-20-30 Atim	<b>Range</b>	: 450 m (1476 ft) (Effective)
<b>Total Length (without stock)</b>	: Min. 685 mm (26.97")	<b>Shot Pattern</b>	: 4 MOA / 100 m
<b>Weight (without magazine)</b>	: Min. 2670 gr (5.89 lb)	<b>Muzzle Velocity</b>	: 850(+50) m/s (2788 ft/s)
<b>Operation</b>	: Gas operated- Short Stroke	<b>Barrel Profile</b>	: NATO Stanag 4172, 6 grooves right hand twist, 1:7 Luger Plus
<b>Mode of Operation</b>	: Semi-Automatic		



# CONTENTS OF THE GUN'S CARRYING BAG

## CARRYING BAG CONTENT

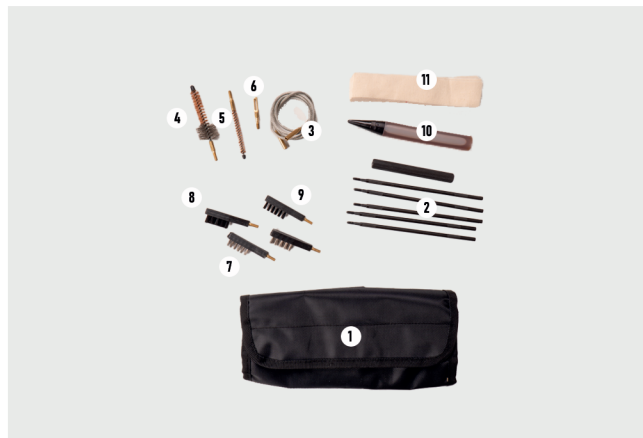


### PACK INCLUDES

- 1 SEM-223 Series Semi-Automatic Pistol
- 2 Maintenance and Cleaning Kit
- 3 Sling
- 4 Magazine
- 5 Sight Adjustment Wrench
- 6 Chamber Safety Flag
- 7 User Manuel
- 8 \*Stock Assembly

*\*In case of purchase together with SEM-223, SEM-223P, SEM-223M, SEM-223L*

## CLEANING KIT AND COMPONENTS



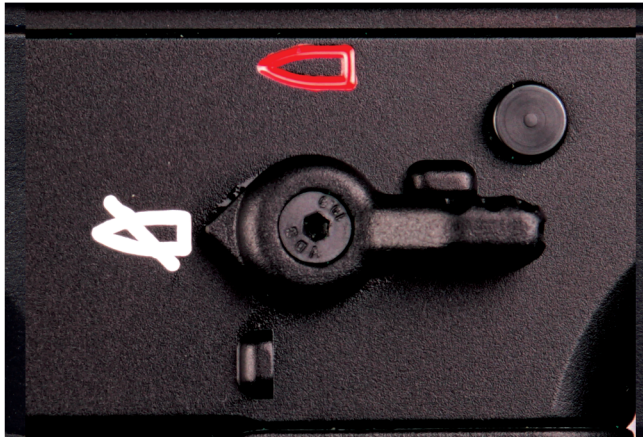
### KIT INCLUDES

- |                                    |                                       |
|------------------------------------|---------------------------------------|
| 1 Cleaning Kit                     | 7 Cleaning Brush Thick (Steel Wire)   |
| 2 Cleaning Rod                     | 8 Cleaning Brush Thin (Plastic Wire)  |
| 3 Flexible Cleaning Rod            | 9 Cleaning Brush Thick (Plastic Wire) |
| 4 Cleaning Rod Brush               | 10 Cleaning Oil                       |
| 5 Bronze Brush                     | 11 Cleaning Cloth                     |
| 6 Cleaning Brush Thin (Steel Wire) |                                       |

# SAFETY OPERATIONS

## Selecting the Firearm in the SAFE Position:

To place the firearm in the SAFE position, rotate the safety lever which is located on the upper-rear side of the of the trigger housing up to white bullet shape. The safety lever's position must be at the position showed in the picture. This will lock the trigger and the firearm cannot be fired.



## Selecting the Firearm in the FIRE Position:

To place the firearm in the FIRE position, rotate the safety lever which is located on the upper-rear side of the of the trigger housing down to red bullet shape. The safety lever's position must be at the position showed in the picture.



# HOW TO LOAD THE FIREARM

## ⚠ WARNINGS

**WARNING!** Before loading, make sure the inside of the barrel is free of dirt or other obstructions.

**WARNING!** Always check each cartridge to ensure it is of the correct caliber and in good condition before loading the firearm.

**WARNING!** Never load a firearm indoors. An accidental discharge will cause property damage serious injury and/or death! Never use live ammunition to function test your pistol indoors.

**WARNING!** Keep fingers away from the trigger while loading.

**WARNING!** Keep muzzle pointed in a safe direction.

1. Place the safety lever in the SAFE 'white bullet shape' position.

2. Load the magazine with the correct ammunition by pressing the cartridges one at a time into the magazine's feed lips. When loading the rounds into the magazines ensure the base of the cartridge is in contact with the back of the magazine.

3. Pick up the firearm with your primary hand and the magazine with your other. Insert the magazine into the magazine slot at the bottom.

4. Press the magazine in until you feel the magazine catch engage. You should hear an audible click when it locks into the place, pull down on the magazine to ensure it has locked into position properly.

5. Keep the muzzle pointed in a safe direction with fingers away from the trigger.

6. Place the safety lever in the FIRE 'white bullet shape' position

7. While holding the firearm in your primary hand, use the other hand to pull the charging handle rearward, disengaging it and allowing it to move forward. As it moves rapidly forward under spring pressure, the bolt will strip a round from the magazine and insert it into the chamber. The pistol is now loaded and ready to fire.





## HOW TO LOAD THE FIREARM

**8. CAUTION:** WHEN the RELEASING TO CHARGING HANDLE, BE SURE TO AVOID PINCHING HAZARDS, AS IT IS UNDER PRESSURE FROM THE RECOIL SPRING. IT IS IMPORTANT TO ALLOW THE CHARGING HANDLE AND BOLT TO MOVE FREELY FORWARD UNDER SPRING TENSION. WHILE GOING TO FORWARD, DO NOT ATTEMPT TO SLOW THE CHARGING ARM AND BOLT, THIS MAY CAUSE IT TO HANG FIRE.

**9.** If you don't want to shoot, please ensure the safety is in the SAFE 'white bullet shape' position

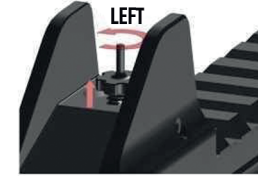


### WARNING!

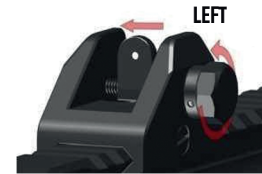
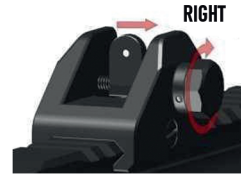
The pistol is now loaded and will fire if the safety lever is moved to the FIRE 'red bullet shape' position and the trigger is pulled! Handle with extreme caution and keep the muzzle pointed in a safe direction!

## SIGHT SYSTEM AND ADJUSTMENTS

Akdaş SEM-223, SEM-223P, SEM-223M, SEM-223L model sight system consists of two parts, front and rear. In both parts, it protects the shooting settings and the sight system against external impacts.



There is a height adjustment on the front sight for accurate aiming. This setting allows you to set target hits up or down.



There is a leaf-hole front sight in the rear sight. You can move the shots to the right or left by turning the adjustment screw next to the Rear Sight.

SEM-223, SEM-223P, SEM-223M, SEM-223L barrels end, have a 1/2x28 threaded and 3-lug quick attachment for suppressor mounting options.



# AIMING AND SHOOTING

## ⚠️ WARNINGS

### **WARNING!**

The barrel will be very hot after firing!

### **WARNING!**

Keep your fingers away from the muzzle! Avoid touching the barrel or placing the hot barrel in contact with objects that may be damaged by heat or those that could ignite!

### **WARNING!**

Always unload your pistol immediately after use and prior to cleaning and storage to minimize the risk of an accidental discharge. If your pistol ever fails to fire keep it pointed at the target at least 30 seconds in the event of a hangfire (slow ignition). If the round still does not fire, firstly remove the magazine, while being careful to avoid exposure to the breech, operate the charging handle to eject the live round.

1. Aim the pistol at the lower-midpoint of the target to get good accuracy result. When firing this pistol, you may need to experiment with different shooting styles until you find the method which best suits your sporting activity. Remember to always fire the pistol in such a manner that you can maintain a safe muzzle direction at all times.

2. Disengage the safety lever by moving to the FIRE red bullet shape' position.

3. After aiming on your target, place your finger on the trigger.

4. Keep your sights aligned on the target. Slowly pull the trigger to fire the first round.

5. Being a semi-automatic pistol, the pistol's action (its moving parts) will cycle after the first round is fired. As the bolt moves rearward, the extractor will pull the empty cartridge case from the chamber and eject it from the pistol. (Make sure there are no bystanders in close proximity on either side of the pistol who could be injured by the ejected cartridge case or gasses expelled from the pistol.)

**NOTE:** If the trigger is pressed again, the pistol will fire! Keep the pistol pointed in a safe direction. Keep your fingers away from the muzzle when firing the pistol.

6. Firing may be continued in this manner until the magazine is empty.

7. When the last round fired the pistol will make bolt catch.

8. When firing is finished, place the safety lever in the SAFE 'white bullet shape' position.



# HOW TO UNLOAD

## ⚠ WARNINGS

### WARNING!

The pistol will fire if the magazine is removed if the trigger is pulled when a cartridge is in the chamber.

### WARNING!

If dropped, any firearm could fire when there is a cartridge in the chamber and the safety lever is in the 'red bullet shape' position.

### WARNING!

When the shooting is finished, to unload the pistol, you cannot move the safety lever in the SAFE - white bullet position after the shot is over. For this, you need to pull the charging handle (at most 1-2 cm or half inch) till the click sound occurred, then release. In this way, the hammer will return to its safe position and you can take the weapon in SAFE - white bullet position.

1. Move the safety lever in the SAFE 'white bullet shape'.

2. Remove the magazine from the pistol. While holding the pistol grip with one hand, use the thumb of the other hand to press the magazine release lever forward. Now, you can remove the magazine by pulling it down from the magazine slot.

3. Move the safety lever in the FIRE 'red bullet shape' position. Pull the charging (cocking) lever to the rear. If there is live bullets or empty casings in the chamber, it would come out. When the lever is fully rearward, press the underside of the bolt catch button on the left side of the firearm. This will lock the bolt open. Check the chamber, to make sure it is empty. Once you have determined that the chamber is empty and there is no magazine in the pistol, press the top of the bolt catch button to allow the bolt to travel forward. Move the safety lever in the SAFE 'white bullet shape' position.

4. Pull the trigger by holding it in the safe direction. Release the charging lever by pulling it back about 1cm. Turn the safety latch in the SAFE 'White bullet shape' position. Your firearm is now safe. To keep your firearm with a magazine mounted, make sure that the magazine is empty. You can mount the magazine.



## IN CASE OF THE SHOOTING FAILURE

**WARNING!** Keep muzzle pointed in a safe direction.

1. Move the safety lever in the SAFE 'white bullet shape' position.
2. Remove the magazine from the pistol. While holding the pistol grip with one hand, use the thumb of the other hand to press the magazine release lever forward. Now, you can remove the magazine by pulling it down from the magazine slot.
3. Move the safety lever in the FIRE 'Red bullet shape' position. Pull the charging (cocking) handle rearward. When the handle is fully rearward, push the downside of bolt catch button located on left side of the pistol. This will lock the bolt open. Inspect the chamber to ensure it is empty, once you determine that the chamber is empty and the gun has no magazine, let the bolt go forward, pressing the top of the bolt catch button. Move the safety lever in the SAFE 'white bullet shape' position.
4. If there is a bullet (empty or live round) in the chamber, release the bolt with bolt catch button. Try to fire again in a secured position. If doesn't fire, move the safety lever in the SAFE - white bullet position, then (in order from back to front) release the upper receiver holding pins. Remove the upper receiver to your hand. Take out the bolt out. If you can take the round out, take the firearm to a competent gunsmith to remove the round and ensure proper functioning.



## IN CASE OF THE SHOOTING FAILURE

5. In the event that a cartridge remains in the chamber after pulling the trigger and the extractor fails to remove it (whether or not it has fired). you should remove the magazine. then work the bolt charging/cocking handle several times to try to eject the cartridge. If this does not eject the cartridge. pull the charging/cocking handle rearward. When the handle is fully rearward. push the downside of bolt catch button located on left side of the pistol. This will lock the bolt open. Follow the instructions found on this manual to field stripping your pistol before attempting to remove the cartridge. If after field stripping your pistol. you are still unable to remove the cartridge casing. do not reassemble the pistol. Take the pistol to a competent gunsmith to remove the round and ensure proper functioning.



TYPE OF JAM STOPPAGE	REASON FOR MISFIRE	REPAIR AND OPERATION TO BE DONE
Misfire	<ul style="list-style-type: none"> <li>- Safety</li> <li>- Empty cartridge chamber</li> <li>- Defective ammunition</li> <li>- Breaking the Cock</li> <li>- Closed sear or dirty firing pin</li> </ul>	<ul style="list-style-type: none"> <li>- Take a fire position</li> <li>- Load the gun</li> <li>- Reload the gun</li> <li>- Replaced</li> <li>- Cleaned</li> </ul>
Cocking Failure	<ul style="list-style-type: none"> <li>- Broken sear</li> <li>- Incorrect trigger cocking mechanism</li> </ul>	<ul style="list-style-type: none"> <li>- Replaced</li> <li>- Replaced</li> </ul>
Failure to Feed	<ul style="list-style-type: none"> <li>- Defective ammunition</li> <li>- Dirty firing chamber</li> </ul>	<ul style="list-style-type: none"> <li>- Replaced</li> <li>- Cleaned</li> </ul>
Cartridge Extraction Problem	<ul style="list-style-type: none"> <li>- Extractor breakage and jamming</li> <li>- Excessively dirty cartridge chamber</li> </ul>	<ul style="list-style-type: none"> <li>- Replaced</li> <li>- Cleaned</li> </ul>
Safety Pin Does Not Stay in Position	<ul style="list-style-type: none"> <li>- Safety lever breakage</li> <li>- Safety lever jamming</li> </ul>	<ul style="list-style-type: none"> <li>- Replaced</li> <li>- Adjusted</li> </ul>
Back sight and front sight do not stop in the selected position	<ul style="list-style-type: none"> <li>- Sight adjustment lock wear or breakage</li> <li>- Loosening or dislocation of the sight position screw</li> <li>- Back sight may have been damaged</li> </ul>	<ul style="list-style-type: none"> <li>- Replaced</li> <li>- Screw tightened or replaced</li> <li>- Replaced</li> </ul>

# FIELD STRIPPING / DISASSEMBLY, ASSEMBLY OF THE GUN

To open the inside of the gun, press the fixing pin on the left side next to the safety lever on lower receiver and pull it all the way from the right side.

Remove the spring and the mechanism together by pulling the spring back on the rear part of the opened upper receiver.

**WARNING!** Please check the firearm and ensure that there is no blowback and damaged parts in the interval parts.



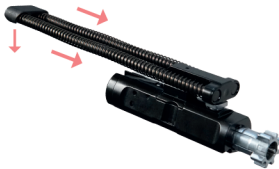
## Removing the recoil spring from Bolt



Remove mechanism part from upper receiver.



To reinstall the spring, remove the spring fixing from the initial slot of the spindle by pulling down on two of the recoil springs simultaneously. After removal, the springs will come out of the spindle freely.



After removing the springs and the rod plug, the rod will come out of the movement body easily. After replacing the springs, the first step is to reinsert the rods onto the mechanism and then install the springs.



Reinsert the mechanism into the upper body with the execution spring part facing upwards.



# FIELD STRIPPING / DISASSEMBLY, ASSEMBLY OF THE GUN

## Attaching the lower and upper receivers

### WARNING!

Be careful not to pinch your finger during this process.

### WARNING!

Keep muzzle pointed in a safe direction.

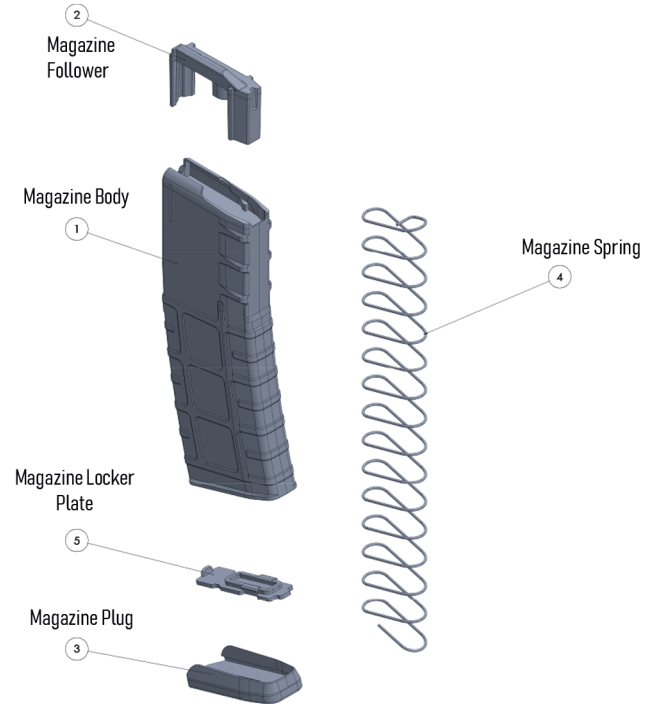
Push the hammer back with your hand to cock it and be sure that locked. Ensure that, the upper-lower receivers pivot pins, completely pulled. Our lower receiver is ready to assemble.



As shown in the figure, first press the recoil spring plate on the upper receiver and at the same time push the lower receiver upwards to close the upper receiver. Then lock the upper receiver by placing the fixing pin in its position before it was opened.

## Magazine Assembly

The metal magazine assembly loading 10-20-30 rounds and contains the following parts.



## USER LEVEL MAINTENANCE AND CLANING

### WARNINGS

**WARNING!** Before beginning the cleaning process, check to ensure the pistol is unloaded. (See the Unloading the Pistol section.)

**WARNING!** There may be sharp edges on parts of the firearm. Keep your fingers protected by Wearing a pair of protective gloves when cleaning.

**WARNING!** You should wear eye protection, such as shooting glasses or goggles, when cleaning this pistol to protect your eyes from the tensioned parts, such as springs, that could become dislodged during the cleaning procedures.

**WARNING!** Excessive use of cleaning solvents or lubricants can adversely affect your pistol's functioning. Wipe the inside of the barrel dry before firing and ensure that it is free of obstructions.

**WARNING!** Some cleaning solvents produce hazardous vapors. Read and follow the solvent manufacturer's cautions found on the product's package.

**WARNING!** Handling ammunition and cleaning firearms results in exposure to lead and other substances that can pose healthy risks. Wash your hands and face after firing your pistol or after cleaning it.

**WARNING!** This firearm should be checked periodically for worn or damaged parts by a competent gunsmith. This will help ensure its safe functioning and a long service life.

**WARNING!** Do not spray or apply lubricants directly on ammunition. If the powder charge of a cartridge is affected by the lubricant, it may not be ignited, but the energy from the primer may be sufficient to push the bullet into the bore where it may become lodged. Firing a subsequent bullet into the obstructed bore will damage the firearm and may cause injury to the shooter and those nearby. Use lubricants properly. You are responsible for the proper care and maintenance of your firearm and ammunition.

### Cleaning the Intervals

Always clean your pistol as soon as possible after firing to prevent buildup of shooting residue and to prevent corrosion from starting. To maintain your pistol in good working order, it should be cleaned regularly even if it has not been fired. If you live in a low-humidity area, this may mean doing a full clean once or twice a year; but if you live in a high-humidity area, it may be necessary to clean your pistol as often once a week.

**NOTE:** In freezing weather (below 32°F. or 0°C.) the use of a dry lubricant (instead of oil) for lubrication may work better.

## USER LEVEL MAINTENANCE AND CLANING

1. Obtain a quality cleaning kit and thoroughly review the manufacturer's instructions.
2. Follow the pistol field stripping procedures.
3. To clean the barrel, select the correct caliber cleaning brush and attach it to a cleaning rod.
4. Dampen the brush with gun cleaning solvent and then push the brush through the barrel several times.
5. Remove the brush and attach a correctly sized cloth cleaning patch to the cleaning rod and push it through the barrel several times to remove loosened fouling.
6. Repeat this process with the brush and cleaning patches until a final patch comes out clean after swabbing the bore. Lightly oil the bore.
7. Remove shooting residue from the pistols action parts and outer surfaces by wiping them with a soft cloth dabbed in gun cleaning solvent. Then be sure to remove all excess solvent and dry them.
8. Finally, wipe down all outer surfaces with a soft cloth dipped in a good quality gun oil.

**WARNING!** When cleaning the inside of the barrel with a slush brush and slush cloth, never pull the rod from the end of the barrel towards the firing chamber!

**WARNING!** Never use force when disassembling, cleaning and assembling the weapon!



### **a. Preparation for Storage:**

Before your firearm is stored, it should be thoroughly cleaned and lightly oiled. A thin layer of high-quality firearm oil should be applied to all exposed surfaces. In humid conditions, ensure that cleaning cloths used are dry. After the metal parts are dried, they should not be touched with bare hands. For normal storage periods, metal parts are lightly oiled with protective oil, and for longer periods, they are oiled with grease. The firearm should never be wrapped with cloth or similar material, and no plug should be placed in the barrel, as these can cause the firearm to rust by absorbing moisture.

### **b. Cleaning After Long-Term Storage:**

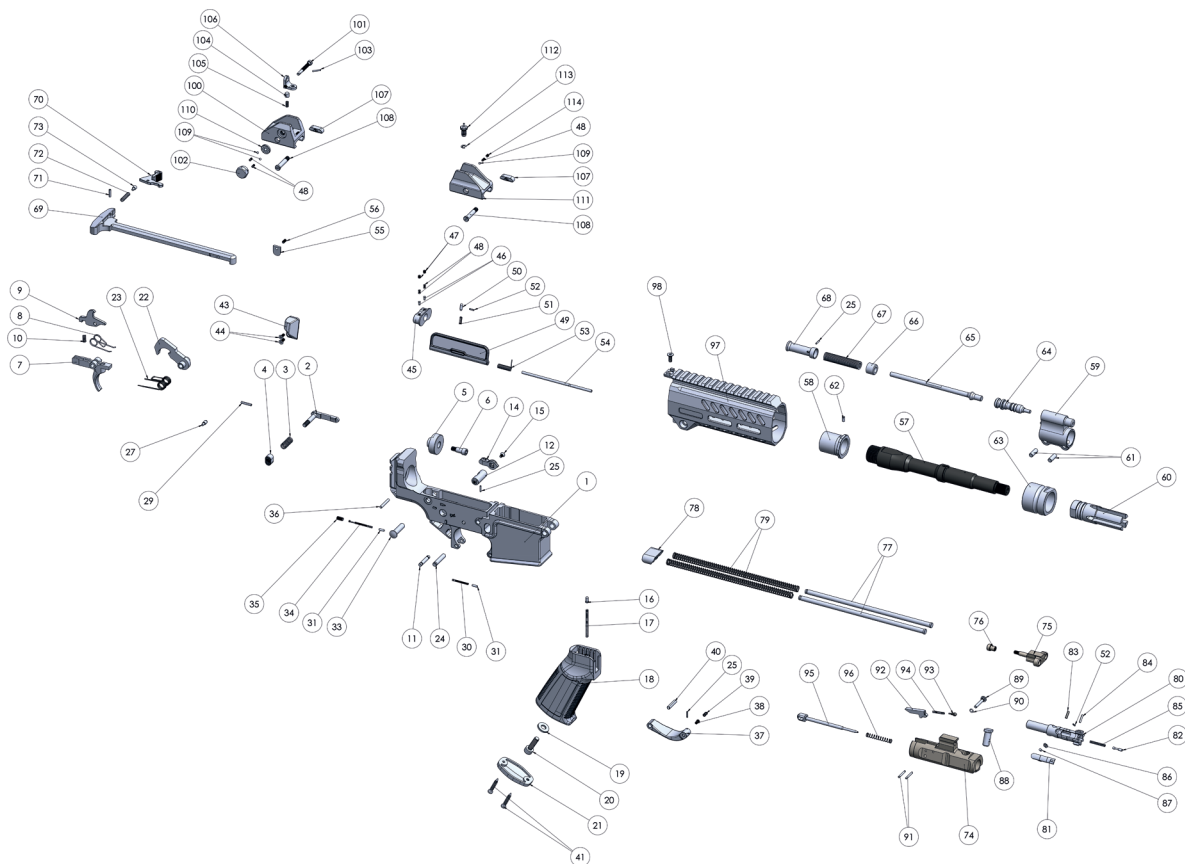
A firearm taken out of storage after an extended period should be thoroughly cleaned and oiled with normal protective oil. If it is to be fired immediately, ensure that the oil used for storage (protective or grease) is completely removed, the inside of the barrel is dry, and there is no obstruction before firing.

BEFORE STORING, CHECK IF YOUR SEMI-AUTOMATIC PISTOL IS LOADED. STORE FIREARMS AND AMMUNITION SEPARATELY AND IN A SECURE PLACE INACCESSIBLE TO UNAUTHORIZED INDIVIDUALS. ALWAYS LOCK YOUR FIREARMS SAFELY WHEN NOT IN USE. CONSULT YOUR COUNTRY'S FIREARMS REGULATIONS FOR THE SAFE STORAGE OF FIREARMS AND AMMUNITION.

### **WARNING!**

Modifying or changing parts and/or internal safeties is dangerous and voids the warranty. This firearm is designed to function properly with original parts. It is your responsibility to ensure that all purchased parts are intended for this firearm, installed correctly, and both spare and original parts are not replaced or modified. Your firearm is a complex and delicate tool with many parts that need to be correctly associated with other parts for proper and safe operation. Assembling a firearm with incorrect or modified parts can lead to damage, danger, and malfunction, resulting in injury or death to yourself and others. Always consult a qualified gunsmith for any work on your firearm.

# SPARE PARTS CATALOGUE



# SPARE PARTS CATALOGUE

PART NO	PART NAME
1	Lower Receiver
2	Magazine Lever
3	Magazine Lever Spring
4	Magazine Lever Button
5	Buffer
6	Buffer Screw
7	Trigger
8	Trigger Spring
9	Disconnecter
10	Disconnecter Spring
11	Trigger Pin
12	Safety Body
13	Safety Lever (short)
14	Safety Lever (long)
15	Pivot Pin
16	Safety Pin
17	Safety Spring
18	Pistol Grip
19	Pistol Grip Screw
20	Pistol Grip Pivot Pin

PART NO	PART NAME
21	Pistol Grip Plug
22	Hammer
23	Hammer Spring
24	Hammer Pin
25	Pivot Pin
26	Mechanism Stopper Spring
27	Mechanism Stopper Spring Pin
28	Mechanism Stopper
29	Pivot Pin
30	Pivot Pin Spring
31	Pivot Pin Plunger
32	Front Connection Pin
33	Back Connection Pin
34	Back Connection Pin Spring
35	Pin
36	Pivot Pin
37	Trigger Guard
38	Trigger Guard Pin
39	Trigger Guard Pin Spring
40	Pivot Pin

PART NO	PART NAME
41	Pistol Grip Plug Screw
42	Upper Receiver
43	Extractor
44	Pivot Pin
45	Upper Receiver Cover
46	Upper Receiver Cover Fixing Pin
47	Pivot Pin
48	Front-delt Sight Pin
49	Plastic Dust Cover
50	Dust Cover Locking Pin
51	Dust Cover Locking Pin Spring
52	Pivot Pin
53	Dust Cover Spring
54	Dust Cover Pin
55	Cocking Handle Locking Plate
56	Pivot Pin
57	Barrel
58	Barrel Head
59	Gas Stroke Holder
60	Flash Hidener



# SPARE PARTS CATALOGUE

PART NO	PART NAME
61	Gas Stroke Fixing Pin
62	Barrel Head Pin
63	Barrel Lashing Nut
64	Gas Stroke
65	Gas Stroke Rod
66	Gas Stroke Rod Spring Sleeve
67	Gas Stroke Spring
68	Spring Holder
69	Cocking Handle
70	Cocking Handle Lock
71	Pivot Pin
72	Cocking Handle Lock Spring
73	Cocking Handle Lock Spring Pin
74	Mechanism
75	Mechanism Upper Part
76	Mechanism Upper Part Clamping Pin
77	Mechanism Upper Part Pin
78	Mech. Upper Part Clamping Pin Spring
79	Mechanism Rod
80	Recolt Spring Rod Part

PART NO	PART NAME
81	Recolt Spring
82	Mechanism Head
83	Extractor
84	Ejector
85	Extractor Pin
86	Ejector Pin
87	Ejector Spring
88	Extractor Spring
89	Polyurethane Extractor Spring
90	Shackle Pin
91	Firing Pin Safety Lever Pin
92	Firing Pin Safety Lever
93	Firing Pin Safety Lever Plug
94	Firing Pin Safety Lever Spring
95	Firing Pin
96	Firing Pin Spring
97	Forearm
98	Pivot Pin
99	Pivot Pin
100	Rear Body

PART NO	PART NAME
101	Rear Set Screw
102	Rear Set Screw
103	Rear Set Screw Pin
104	Rear Fixing Pin
105	Rear Fixing Pin Spring
106	Rearsight
107	Picatinny Fixing Screw
108	Front-Rear Body Screw
109	Steel Ball
110	Rear Ball Lock Plug
111	Frontsight Body
112	Frontsight
113	Frontsight Screw
114	Frontsight Spring Screw





## WARRANTY CONDITIONS

---

**1-**The warranty period begins on the delivery date and lasts for 2 years.

**2-**The warranty covers the complete product and all its components, including accessories.

In case the product is faulty, the customer has the right to take one of the actions specified in Article 11 of the Consumer Protection Law No. 6502, such as:

- a. Withdrawal from the contract
- b. Request for a discount from the sale price
- c. Request for free repair
- d. Request for replacement with an equivalent product free of defects

**4 -** If the consumer selects the option of free repair, the seller is obligated to perform the necessary repairs without charging any fees, such as labour costs, costs for replacement parts, or any other expenses. The consumer also has the right to exercise this option with the manufacturer or importer. The seller, manufacturer, and importer share joint responsibility for ensuring the consumer's right to free repair.

**5-**In case the consumer, after exercising the right to free repair, encounters any of the following situations within the warranty period:

- Recurrence of the malfunction
- Exceeding the maximum repair time
- Determination by an authorized service station, seller, manufacturer, or importer that the product cannot be repaired, as evidenced by a report;

The consumer has the rights to ask for a refund, a reduction in price proportional to the defect, or to replace the faulty product with an equivalent product without any defects if it is possible. The seller is bound to comply with the consumer's request, and in doing so, the manufacturer and importer are jointly responsible.

**6 -** The repair period for the product must not exceed 30 working days. This time frame commences from the notification date of the defect to the authorised service station or seller within the warranty period, or from the authorised service station delivery date if the defect occurs outside of the warranty period. If there is a malfunction within the warranty period, the repair time will be included in the warranty period.

**7-**The manufacturer bears no responsibility for unauthorised interventions, tampering, or the installation of materials and accessories not listed in the spare parts inventory without written consent from the manufacturer. Defects resulting from the use of incorrect maintenance materials and techniques fall outside the warranty's coverage. Defects resulting from the product's usage in a manner inconsistent with the user manual's instructions are likewise outside the warranty's coverage.

**8-**If there are any conflicts related to the implementation of rights granted by the warranty, the consumer can refer to the Consumer Arbitration Committee or Consumer Court in the location of their residence or where the consumer transaction was carried out.

**9-** In case the seller fails to furnish this Warranty Certificate, the consumer may approach the Ministry of Customs and Trade, General Directorate of Consumer Protection and Market Surveillance for further action.





## AKDAŞ SİLAH A.Ş.

Tel : 444 64 46  
+90 (332) 516 14 29 (pbx)  
Fax : +90 (332) 516 14 34  
WhatsApp : +90 (537) 357 68 40  
+90 (531) 712 29 09  
+90 (531) 889 02 36

Huğlu Mah. Huğlu Cad. Akdaş Sanayi Sitesi No:95/A - Beyşehir / Konya / TÜRKİYE

[www.akdasarms.com](http://www.akdasarms.com)



/akdasarms



/akdasarms



/akdassilah



/akdassilah